

1 SELECT AN AREA:
Click a content or grade level area to see all available measures within that particular area.

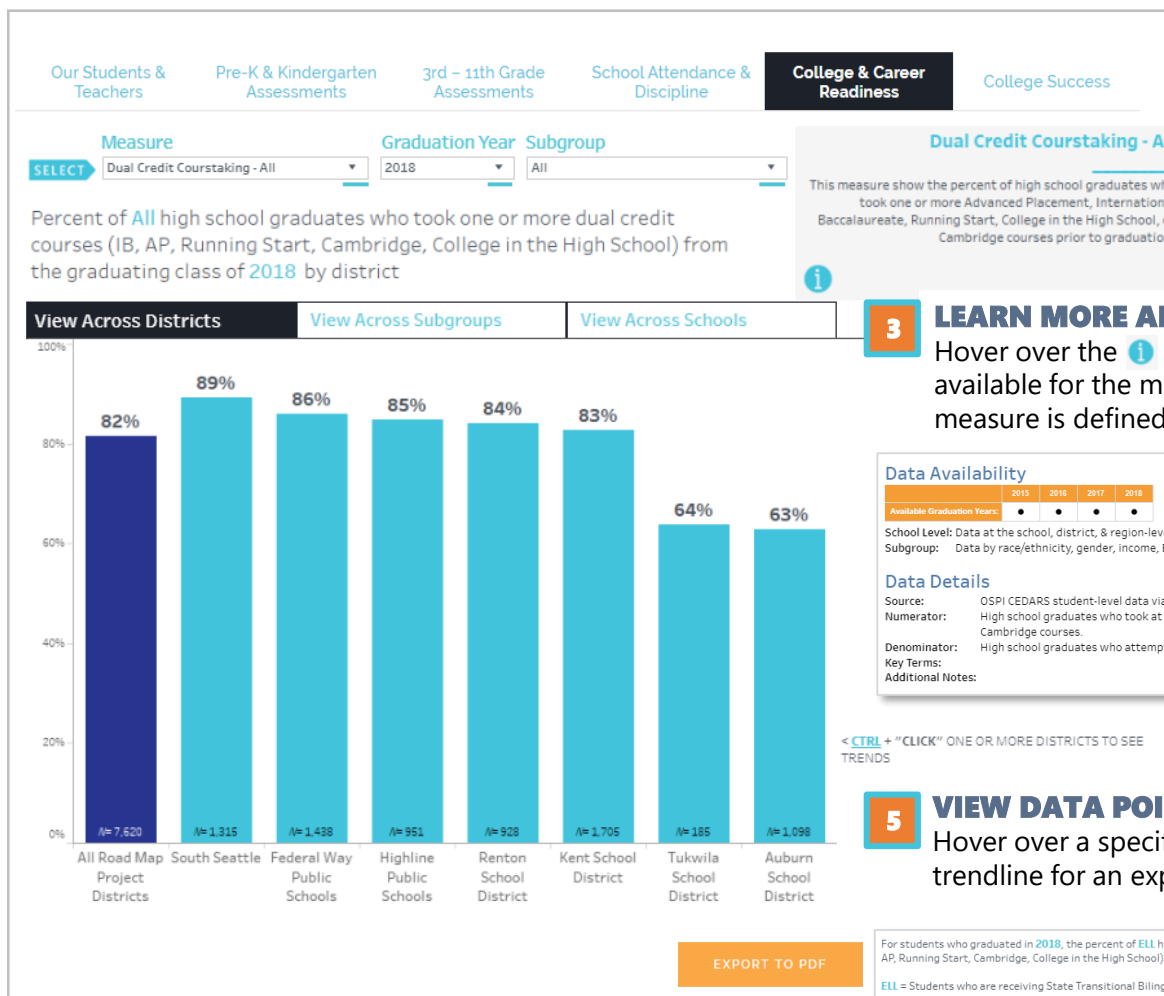
2 SELECT A MEASURE AND APPLY FILTERS:
Select the measure you want to view, and apply filters to Year, Subgroup, District, or School to examine more specific data.

4 VIEW ACROSS DISTRICTS:
View outcomes for one student/teacher subgroup across each district.

VIEW ACROSS SUBGROUPS:
View outcomes in one school, district, or all Road Map Project Districts across each student/teacher subgroup.

VIEW ACROSS SCHOOLS:
View outcomes for one student/teacher subgroup across each school. View where schools are located on the map of the region.

6 VIEW AND COMPARE TRENDS BY DISTRICT OR SUBGROUP:
Select a bar to view trends of a specific District or Subgroup over time. Hold the Ctrl key to select additional bars to view multiple trendlines and see if gaps are closing.



3 LEARN MORE ABOUT EACH MEASURE:
Hover over the **i** icon to learn what data is available for the measure and how the measure is defined.

5 VIEW DATA POINT DETAILS:
Hover over a specific bar or point on a trendline for an explanation of the data point.

For students who graduated in 2018, the percent of ELL high school graduates who took one or more college-level courses (IB, AP, Running Start, Cambridge, College in the High School) at All Schools in Road Map Region was 57% (of 727 students).
ELL = Students who are receiving State Transitional Bilingual Instruction Program services (STBIP).

7 DOWNLOAD AND PRINT YOUR CUSTOMIZED VIEW:
Download a printer friendly PDF version of your customized dashboard view to share or print.



